



25%

CHANCE THAT CHILD WILL HAVE SCD
IF BOTH PARENTS ARE CARRIERS

\$14,772

AVERAGE COVERAGE COST PER YEAR
FOR CHILDREN WHO HAVE SICKLE CELL

DID YOU KNOW?

- Sickle cell disease (SCD) affects millions of people throughout the world and is particularly common among those whose ancestors came from sub-Saharan Africa; Spanish-speaking regions in the Western Hemisphere (South America, the Caribbean, and Central America); Saudi Arabia; India; and Mediterranean countries such as Turkey, Greece, and Italy.
- Sickle cell disease occurs more often among people from parts of the world where malaria is or was common. It is believed that people who carry the sickle cell trait are less likely to have severe forms of malaria.
- SCD is diagnosed with a simple blood test. It most often is found at birth during routine newborn screening tests at the hospital. In addition, SCD can be diagnosed before birth.

www.MyThreeSicklers.org

RESEARCH BY THE SICKLE CELL DISEASE INFORMATION CENTER

FACTS ABOUT SICKLE CELL DISEASE

**100,000
AMERICANS**

ARE LIVING WITH SICKLE CELL ANEMIA

1 OUT OF **365**

AFRICAN-AMERICAN BIRTHS HAVE SICKLE CELL DISEASE

1 OUT OF **16,300**

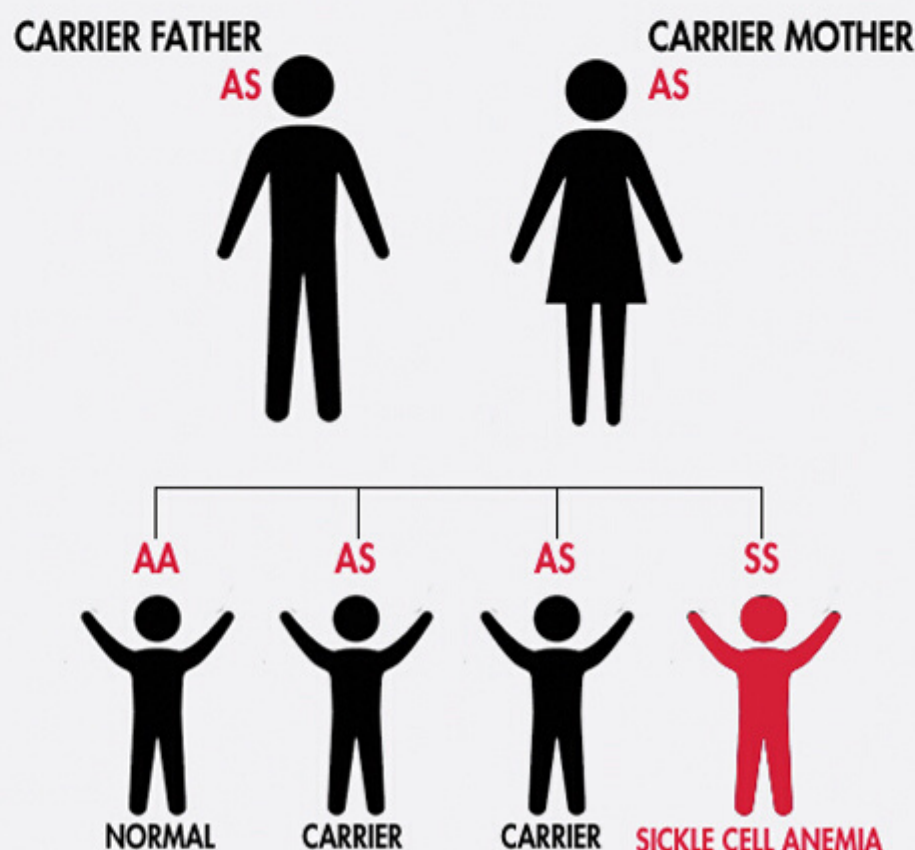
HISPANIC-AMERICAN BIRTHS HAVE SICKLE CELL DISEASE

1 OUT OF **13**

AFRICAN-AMERICANS CARRY THE SICKLE CELL TRAIT

**1,000 BABIES
BORN EVERY YEAR**

WITH SICKLE CELL DISEASE



3 MIL

PEOPLE ARE CARRYING THE SICKLE CELL TRAIT